



For and on behalf of:



OLDHAM

Tuesday 13th January 2009

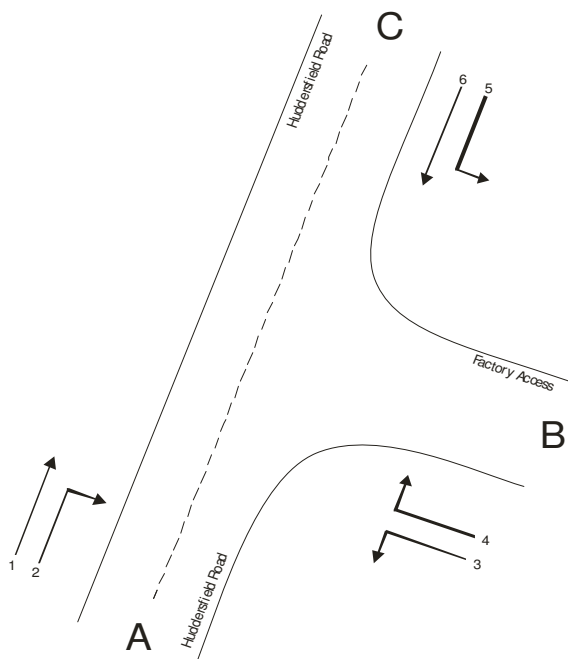
0730-0930

1430-1800

Drawing N°: 180818 - 02

Site: 2

Location: Huddersfield Road /
Factory Access



TIME	TO ARM A							TOT	FROM ARM A							TOT
	CAR	LGV	HGV	PSV	MCL	PCL	CAR		LGV	HGV	PSV	MCL	PCL			
07:30	46	5	0	1	0	0	52	8	0	3	1	0	0	12		
07:45	70	6	1	0	1	0	78	24	4	5	0	0	0	33		
HH/TOT	116	11	1	1	1	0	130	32	4	8	1	0	0	45		
08:00	67	5	1	1	0	0	74	24	3	2	0	0	0	29		
08:15	60	3	0	0	0	0	63	10	4	1	1	0	1	17		
08:30	67	13	2	1	0	0	83	31	9	2	1	0	0	43		
08:45	50	2	2	0	0	0	54	43	9	3	0	0	0	55		
H/TOT	244	23	5	2	0	0	274	108	25	8	2	0	1	144		
09:00	56	5	4	1	0	0	66	22	3	0	0	0	0	25		
09:15	36	4	5	0	0	0	45	19	10	4	1	0	0	34		
HH/TOT	92	9	9	1	0	0	111	41	13	4	1	0	0	59		
P/TOT	452	43	15	4	1	0	515	181	42	20	4	0	1	248		

TIME	TO ARM B							TOT	FROM ARM B							TOT
	CAR	LGV	HGV	PSV	MCL	PCL	CAR		LGV	HGV	PSV	MCL	PCL			
07:30	2	0	0	0	0	0	2	0	0	0	0	0	0	0		
07:45	3	0	1	0	0	0	4	0	0	0	0	0	0	0		
HH/TOT	5	0	1	0	0	0	6	0	0	0	0	0	0	0		
08:00	0	1	0	0	0	0	1	0	0	0	0	0	0	0		
08:15	1	0	0	0	0	0	1	1	0	0	0	0	0	1		
08:30	0	1	0	0	0	0	1	1	1	1	0	0	0	3		
08:45	0	0	0	0	0	0	0	0	0	0	0	0	0	0		
H/TOT	1	2	0	0	0	0	3	2	1	1	0	0	0	4		
09:00	0	0	0	0	0	0	0	3	0	0	0	0	0	3		
09:15	0	1	1	0	0	0	2	0	0	1	0	0	0	1		
HH/TOT	0	1	1	0	0	0	2	3	0	1	0	0	0	4		
P/TOT	6	3	2	0	0	0	11	5	1	2	0	0	0	8		

TIME	TO ARM C							TOT	FROM ARM C							TOT
	CAR	LGV	HGV	PSV	MCL	PCL	CAR		LGV	HGV	PSV	MCL	PCL			
07:30	6	0	3	1	0	0	10	46	5	0	1	0	0	52		
07:45	21	4	4	0	0	0	29	70	6	1	0	1	0	78		
HH/TOT	27	4	7	1	0	0	39	116	11	1	1	1	0	130		
08:00	24	2	2	0	0	0	28	67	5	1	1	0	0	74		
08:15	11	4	1	1	0	1	18	61	3	0	0	0	0	64		
08:30	31	8	2	1	0	0	42	66	12	1	1	0	0	80		
08:45	43	9	3	0	0	0	55	50	2	2	0	0	0	54		
H/TOT	109	23	8	2	0	1	143	244	22	4	2	0	0	272		
09:00	23	3	0	0	0	0	26	54	5	4	1	0	0	64		
09:15	19	9	3	1	0	0	32	36	4	4	0	0	0	44		
HH/TOT	42	12	3	1	0	0	58	90	9	8	1	0	0	108		
P/TOT	178	39	18	4	0	1	240	450	42	13	4	1	0	510		