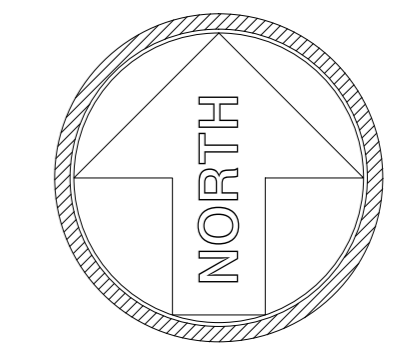




© COPYRIGHT RESERVED  
Do Not Scale From Paper Copies



Station	Co-ordinate Table		
	Eastings	Northings	Level
1	399915.950	40714.919	153.438
2	399914.205	40704.808	181.546
3	399940.180	40696.561	173.664
4	399981.600	40692.461	175.058
5	400029.759	40704.298	176.583
6	400028.938	40711.697	176.640
7	399962.398	40763.770	183.316
8	400105.365	40709.314	179.936
9	400105.973	40714.961	179.205
10	400126.800	40724.086	179.803
11	400134.536	40730.734	179.533
12	400155.292	40736.576	182.769
13	400239.087	40736.937	191.299
14	400242.490	40730.340	191.139
15	40024.763	40724.542	190.420
16	400189.543	40714.279	178.640
17	400163.986	40782.233	186.378

GPS Note:  
This survey is related to Ordnance Survey National Grid by GPS topographic methods. No scale factor has been applied to the survey information. All horizontal distances taken from this drawing are ground distances.

Every effort has been made to confirm drainage run, type and size on site, yet it is advised to check these details against statutory authority records before proceeding with any design.

Note: The underground services information has been supplied by A.E. Byrne

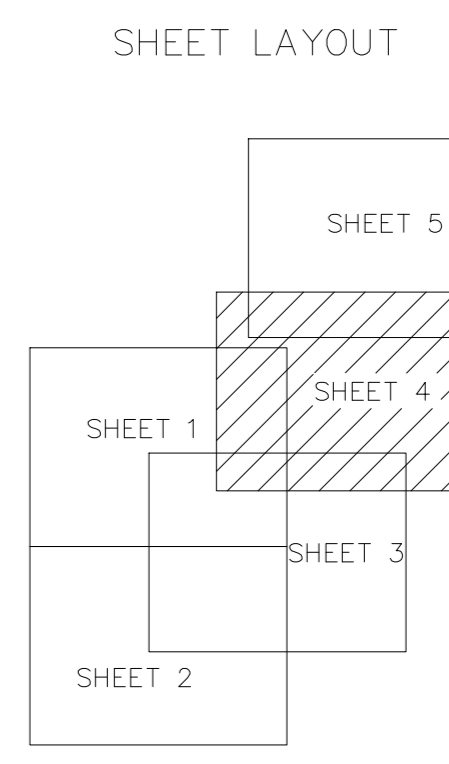
**UTILITY KEY**

	ELECTRIC CABLE
	TELEPHONE CABLE
	CABLE TELEVISION
	COMMUNICATION CABLE
	WATER PIPE
	GAS PIPE
	FUUL DRAINAGE
	SURFACE DRAINAGE
	COMBINED DRAINAGE
	VENT PIPE
	OFFSET FILL PIPE
	GAUGE LINE
	VAPOUR RECOVERY
	SERVICE DUCTS
	UNIDENTIFIED
	END OF TRACE

**ABBREVIATIONS**

AR	ASSUMED ROUTE	PR	PIPE RISER
BD	BLINDHOLE	RE	RECORDING EYE
CB	CATCHPIT	RWP	RAINWATER PIPE
CL	COVER LEVEL	RVV	RAINWATER PIPE
CR	CABLE RISER	SV	STOP VALVE
CP	DOWN PIPE	SWP	SOIL VENT PIPE
EP	ELECTRICITY POLE	TP	TELEGRAPH POLE
EC	EDGE OF CANOPY	TFR	TABLE FROM RECORDS
EOT	END OF TRACE	UL	UNABLE TO LOCATE
FI	FIRE HYDRANT	US	UNABLE TO SURVEY
G	GULLY	VL	WATER LEVEL
GV	GAS VALVE	VP	VENT PIPE
IC	INSPECTION CHAMBER	VR	VAPOUR RECOVERY
IJ	INVERT LEVEL	WV	WATER VALVE
LH	LAMP HOLE	WO	WASH OUT VALVE
LP	LAMP POST		
MH	MANHOLE		
NV	NOT VISIBLE		
NL	NOT LOCATED		

**DISCLAIMER**  
ELECTROMAGNETIC TECHNIQUES AND/OR GROUND PENETRATING RADAR HAVE BEEN USED IN THE LOCATION OF UNDERGROUND SERVICES. THE RESULTS ARE NOT FINAL AND FINAL LOCATIONS SHOULD BE CARRIED OUT TO CONFIRM SERVICE IDENTIFICATION POSITIONS AND PARTICULARLY DEPTHS. WHERE THESE ARE CRITICAL, AN ADDITIONAL REASONABLE EFFORT HAS BEEN MADE IN SEARCHING AVAILABLE RECORD DRAWINGS. THE COMPLETENESS OF THE UNDERGROUND SERVICES INFORMATION CANNOT BE GUARANTEED. THE METHODS OF SURVEY ARE NOT DIFFERENTIATED BY METHOD (LINE AND SONAR SERVICES) AND AS SUCH ALL SERVICES SHOULD BE TREATED AS LIVE.  
WHERE SERVICES ARE NON-METALLIC POSITIONS MAY BE TAKEN FROM RECORDS, TRENCH SCANS & SURFACE DET.  
WHERE QUOTED, DEPTH ESTIMATIONS ARE GENERALLY TO THE CENTRE OF THE SERVICE. DEPTHS TO SURFACE SERVICES AND DRAINS ARE GENERALLY TO INVERT LEVELS UNLESS OTHERWISE STATED.  
PIPE SIZES WHICH CANNOT BE OBTAINED BY VISUAL SURVEY ARE TAKEN FROM RECORD DRAWINGS OR MARKER PLATES WHERE AVAILABLE.  
WHERE GROUND PENETRATING RADAR HAS BEEN USED IT WILL PRIMARILY HAVE BEEN TO IDENTIFY UNDERGROUND UTILITIES. IF POSSIBLE WE WILL ALSO IDENTIFY UNDERGROUND STRUCTURES (TRENCHES) BUT CANNOT GUARANTEE THAT WE WILL IDENTIFY ALL SUCH ITEMS. THE USE OF RADAR CAN BE LIMITED BOTH BY SURFACE CONDITIONS AND ALSO BY SOIL TYPE. DEPTH ESTIMATES SHOULD NOT NORMALLY BE PROVIDED FOR SERVICES LOCATED WITH GPR.



**terrain**  
Land and Architectural Surveyors

Unit 10, The Mill, 100, Mill Lane, Borehamwood, Herts, SG8 6JH  
Tel: 01923 663300  
Fax: 01923 663300  
www.terrainmaps.co.uk

Client  
**EFA**

Project  
**SADDLEWORTH SECONDARY SCHOOL**

Title  
**UNDERGROUND SERVICES**

Drawn by  
**BW**

Checked by  
**NDO**

Scale  
**1:200@AQ**

Date  
**Oct 2014**

Drawing Number  
**TS13-367SC/9 A**

Sheet  
**4** of **5**

All levels related to the GPS network at Station 1.

Scale 1:81.44m