

Station	Co-ordinate Table	Level	
1	399915.950	407114.919	183.438
2	399914.300	407040.808	181.546
3	399945.190	406996.961	175.664
4	399981.600	406932.461	175.028
5	400029.759	407048.298	176.583
6	400028.938	407111.697	178.640
7	399962.398	407163.770	183.316
8	400015.965	407109.314	178.936
9	400115.973	407174.961	179.505
10	400126.880	407243.089	179.803
11	400134.536	407306.734	179.533
12	400155.392	407369.676	183.769
13	400239.667	407368.937	191.299
14	400242.490	407306.340	191.139
15	400214.763	407254.542	190.420
16	400189.543	407174.279	178.643
17	400163.586	407082.233	188.378

GPS Note:  
This survey is related to Ordnance Survey National Grid by GPS 'rapid static' methods. No scale factor has been applied to the survey information. All horizontal distances taken from this drawing are ground distances.

Every effort has been made to confirm drainage run, type and size on site, yet it is advised to check these details against statutory authority records before proceeding with any design.

Note: The underground services information has been supplied by A.E. Byrne

**UTILITY KEY**

	ELECTRIC CABLE
	TELECOMS CABLE
	CABLE TELEVISION
	COMMUNICATION CABLE
	WATER PIPE
	GAS PIPE
	FOUL DRAINAGE
	SURFACE DRAINAGE
	COMBINED DRAINAGE
	FUEL PIPE
	VENT PIPE
	OFFSET FILL PIPE
	GAUGE LINE
	VAPOUR RECOVERY
	SERVICE DUCTS
	UNIDENTIFIED
	END OF TRACE

**ABBREVIATIONS**

AR	ASSUMED ROUTE	PR	PIPE RISER
BD	BACKDROP	RR	ROODING EYE
CP	CATCHPIT	RWP	RAINWATER PIPE
CL	COVER LEVEL	SA	SKIDWAY
CR	CABLE RISER	SV	STOP VALVE
DP	DOWN PIPE	SVP	SOIL VENT PIPE
EP	ELECTRICITY POLE	TF	TELEGRAPHY POLE
EOC	EDGE OF CANOPY	TFR	TAKEN FROM RECORDS
EOT	END OF TRACE	UTL	UNABLE TO SURVEY
PH	FIRE HYDRANT	US	UNABLE TO SURVEY
G	GULLY	WS	WATER LEVEL
GV	GAS VALVE	VP	VENT PIPE
IC	INSPECTION CHAMBER	VM	VAPOUR RECOVERY
I	INVERT LEVEL	WM	WATER METER
LH	LAMP HOLE	WO	WASH-OUT VALVE
LP	LAMP POST		
MH	MANHOLE		
NVE	NO VISIBLE EXIT		
NL	NOT LOCATED		

**DISCLAIMER**  
ELECTROMAGNETIC TECHNIQUES AND/OR GROUND PENETRATING RADAR HAVE BEEN USED IN THE LOCATION OF UNDERGROUND SERVICES. THE RESULTS ARE NOT GUARANTEED AND TRUE LOCATIONS SHOULD BE CARRIED OUT TO CONFIRM SERVICE IDENTIFICATION, POSITIONS AND PARTICULARLY DEPTHS. WHERE THESE ARE CRITICAL, ALTHOUGH ALL REASONABLE EFFORT HAS BEEN MADE IN SEARCHING AVAILABLE RECORD DRAWINGS, THE COMPLETENESS OF THE UNDERGROUND SERVICES INFORMATION CANNOT BE GUARANTEED. THE METHODS OF SURVEY NOT OPERATIVE BETWEEN LINE AND DEAD SERVICES AND AS SUCH ALL SERVICES SHOULD BE TREATED AS LIVE.  
WHERE SERVICES ARE NON-METALLIC POSITIONS MAY BE TAKEN FROM RECORDS, TRENCH SCANS & SURFACE DETAIL.  
WHERE QUOTED, DEPTH ESTIMATIONS ARE GENERALLY TO THE CENTRE OF THE SERVICE, DEPTHS TO GRASS SURFACE AND DRAINS ARE GENERALLY TO INVERT LEVELS UNLESS OTHERWISE STATED.  
PIPE SIZES WHICH CANNOT BE OBTAINED BY VISUAL SURVEY ARE TAKEN FROM RECORD DRAWINGS OR MANHOLE PLATES WHERE AVAILABLE.  
WHERE GROUND PENETRATING RADAR HAS BEEN USED IT WILL PRIMARILY HAVE BEEN TO IDENTIFY UNDERGROUND UTILITIES. IF POSSIBLE WE WILL ALSO IDENTIFY UNDERGROUND STRUCTURES, TANKS ETC. BUT CANNOT GUARANTEE TO HAVE LOCATED ALL SUCH ITEMS. THE USE OF RADAR CAN BE LIMITED BY SURFACE CONDITIONS AND ALSO BY SOIL TYPE. DEPTH ESTIMATES WOULD NOT NORMALLY BE PROVIDED FOR SERVICES LOCATED WITH GPR.

**terrain**  
Land and Architectural Surveyors

14 0148 84300  
15 0148 84301  
16 0148 84302  
17 0148 84303  
18 0148 84304  
19 0148 84305  
20 0148 84306  
21 0148 84307  
22 0148 84308  
23 0148 84309  
24 0148 84310  
25 0148 84311  
26 0148 84312  
27 0148 84313  
28 0148 84314  
29 0148 84315  
30 0148 84316  
31 0148 84317  
32 0148 84318  
33 0148 84319  
34 0148 84320  
35 0148 84321  
36 0148 84322  
37 0148 84323  
38 0148 84324  
39 0148 84325  
40 0148 84326  
41 0148 84327  
42 0148 84328  
43 0148 84329  
44 0148 84330  
45 0148 84331  
46 0148 84332  
47 0148 84333  
48 0148 84334  
49 0148 84335  
50 0148 84336  
51 0148 84337  
52 0148 84338  
53 0148 84339  
54 0148 84340  
55 0148 84341  
56 0148 84342  
57 0148 84343  
58 0148 84344  
59 0148 84345  
60 0148 84346  
61 0148 84347  
62 0148 84348  
63 0148 84349  
64 0148 84350  
65 0148 84351  
66 0148 84352  
67 0148 84353  
68 0148 84354  
69 0148 84355  
70 0148 84356  
71 0148 84357  
72 0148 84358  
73 0148 84359  
74 0148 84360  
75 0148 84361  
76 0148 84362  
77 0148 84363  
78 0148 84364  
79 0148 84365  
80 0148 84366  
81 0148 84367  
82 0148 84368  
83 0148 84369  
84 0148 84370  
85 0148 84371  
86 0148 84372  
87 0148 84373  
88 0148 84374  
89 0148 84375  
90 0148 84376  
91 0148 84377  
92 0148 84378  
93 0148 84379  
94 0148 84380  
95 0148 84381  
96 0148 84382  
97 0148 84383  
98 0148 84384  
99 0148 84385  
100 0148 84386

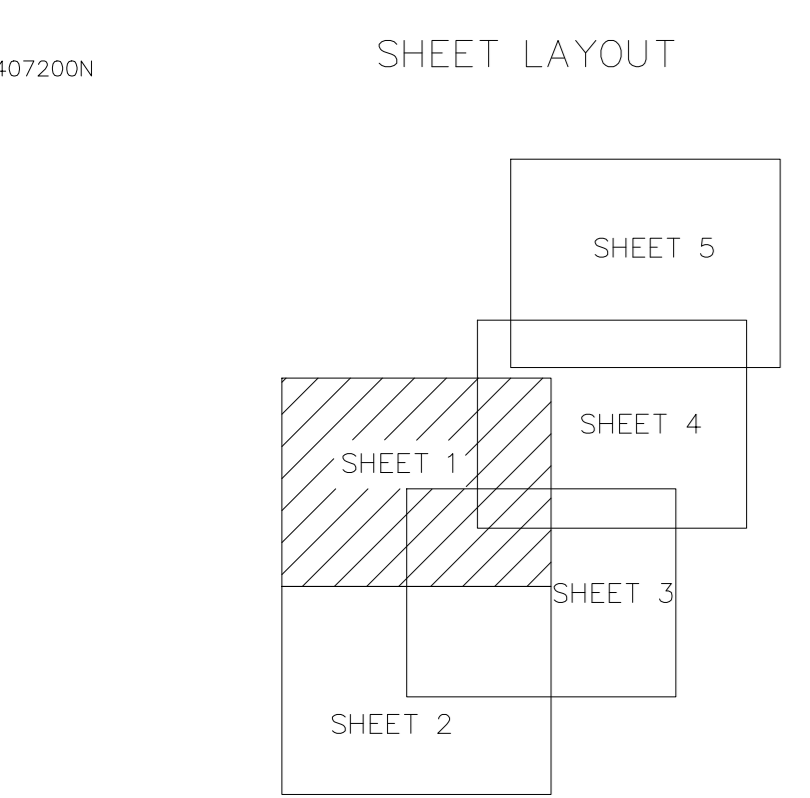
Client: **EFA**

Project: **SADDLEWORTH SECONDARY SCHOOL**

Title: **UNDERGROUND SERVICES**

Drawn by: <b>JW</b>	Checked by: <b>NDO</b>
Scale: <b>1:200@A0</b>	Date: <b>Oct 2014</b>
Drawing Number: <b>TS13-367SC\4</b>	Revision: <b>A</b>
Sheet: <b>1</b> of <b>5</b>	

All levels related to the GPS network of Station 1.  
Value 183.44m



407200N

407150N

407100N

300660E

300600E

+

+

+

+

+

+

+

+

+

+

+

+

+

+

+

+

+

+

+