

Station	Co-ordinate Table		
	Eastings	Northings	Level
1	399915.850	407114.919	183.428
2	399914.305	407045.808	181.546
3	399945.180	406956.561	175.664
4	399981.600	406932.461	175.058
5	400029.759	407048.298	176.583
6	400028.938	407111.697	178.640
7	399962.398	407163.770	183.316
8	400105.365	407109.314	179.936
9	400105.873	407174.961	179.205
10	400128.800	407243.058	173.803
11	400134.536	407308.734	178.533
12	400155.292	407363.676	182.769
13	400239.087	407368.937	191.299
14	400242.490	407306.340	191.139
15	400274.763	407254.542	190.420
16	400189.543	407174.279	178.640
17	400183.886	407082.233	186.378

GPS Note:
This survey is related to Ordnance Survey National Grid by GPS topographic methods. No scale factor has been applied to the survey information. All horizontal distances taken from this drawing are ground distances.

Every effort has been made to confirm drainage run, type and size on site, yet it is advised to check these details against statutory authority records before proceeding with any design.

Note: The underground services information has been supplied by A.E. Byrne

UTILITY KEY

	ELECTRIC CABLE
	TELEPHONE CABLE
	CABLE TELEVISION
	COMMUNICATION CABLE
	WATER PIPE
	GAS PIPE
	FOUL DRAINAGE
	SURFACE DRAINAGE
	COMBINED DRAINAGE
	FUEL PIPE
	VENT PIPE
	OFFSET FILL PIPE
	GAUGE LINE
	VAPOUR RECOVERY
	SERVICE DUCTS
	UNIDENTIFIED
	END OF TRACE

ABBREVIATIONS

AR	ASSUMED ROUTE	PR	PIPE RISER
BE	BACKSIGHT	RE	REDSIGHT
BD	BACKSIGHT	RVP	RAINWATER PIPE
CP	CATCHPIT	SV	STOP VALVE
CL	COVER LEVEL	SVP	SOIL VENT PIPE
CR	CABLE RISER	TP	TELEGRAPH POLE
DP	DOWN PIPE	TFR	TABLE FRAME RECORDS
EP	ELECTRICITY POLE	UL	UNABLE TO LOCATE
EC	EDGE OF CANOPY	VL	VENT LEVEL
EOT	END OF TRACE	VP	VENT PIPE
FI	FIRE HYDRANT	VM	WATER LEVEL
GL	GALLY	VR	VAPOUR RECOVERY
GV	GAS VALVE	WM	WATER LEVEL
IC	INSPECTION CHAMBER	WO	WASH OUT VALVE
IL	INSPECTION LEVEL		
LH	LAMP HOLE		
LP	LAMP POST		
MH	MANHOLE		
NV	NO VISIBLE EXIT		
NL	NOT LOCATED		

DISCLAIMER

ELECTROMAGNETIC TECHNIQUES AND/OR GROUND PENETRATING RADAR HAVE BEEN USED IN THE LOCATION OF UNDERGROUND SERVICES. THE RESULTS ARE NOT FINAL AND FINAL LOCATIONS SHOULD BE CARRIED OUT TO CONFIRM SERVICE IDENTIFICATION POSITIONS AND PARTICULARLY DEPTHS. WHERE THESE ARE CRITICAL, AN ADDITIONAL REASONABLE EFFORT HAS BEEN MADE IN SEARCHING AVAILABLE RECORD DRAWINGS. THE COMPLETENESS OF THE UNDERGROUND SERVICES INFORMATION CANNOT BE GUARANTEED. THE METHODS OF SURVEY ARE NOT DIFFERENTIATE BETWEEN LIVE AND DEAD SERVICES AND AS SUCH ALL SERVICES SHOULD BE TREATED AS LIVE.

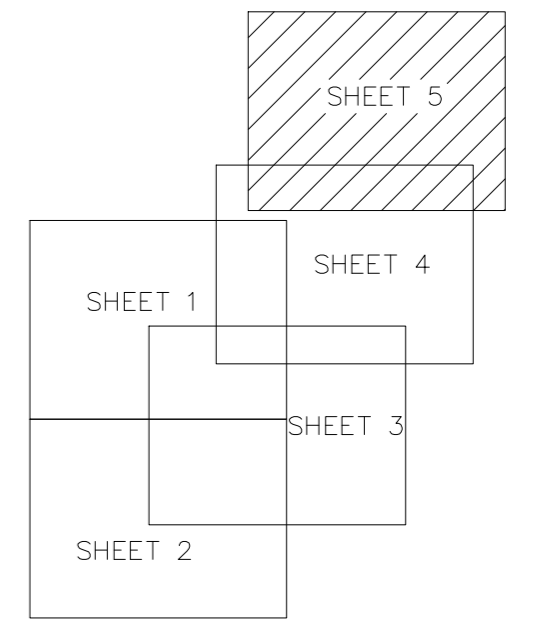
WHERE SERVICES ARE NON-METALLIC POSITIONS MAY BE TAKEN FROM RECORDS, TRENCH SCANS OR SURFACE DETAIL.

WHERE QUOTED DEPTH ESTIMATIONS ARE GENERALLY TO THE CENTRE OF THE SERVICE. DEPTHS TO SURFACE SERVICES AND DRAINS ARE GENERALLY TO INVERT LEVELS UNLESS OTHERWISE STATED.

PIPE SIZES WHICH CANNOT BE OBTAINED BY VISUAL SURVEY ARE TAKEN FROM RECORD DRAWINGS OR MARKER PLATES WHERE AVAILABLE.

WHERE GROUND PENETRATING RADAR HAS BEEN USED IT WILL PRIMARILY HAVE BEEN TO IDENTIFY UNDERGROUND UTILITIES. IF POSSIBLE WE WILL ALSO IDENTIFY UNDERGROUND STRUCTURES (TANKS ETC) BUT CANNOT GUARANTEE TO HAVE LOCATED ALL SUCH ITEMS. THE USE OF RADAR CAN BE LIMITED BOTH BY SURFACE CONDITIONS AND ALSO BY SOIL TYPE. DEPTH ESTIMATES SHOULD NOT NORMALLY BE PROVIDED FOR SERVICES LOCATED WITH GPR.

SHEET LAYOUT



Land and Architectural Surveyors

 14 RIVER STREET

 BRISTOL AVON

 BS1 1YU

 TEL: 01273 81330

 FAX: 01273 81330

 email: info@terrain.co.uk

 www.terrain.co.uk

Client: **EFA**

Project: **SADDLEWORTH SECONDARY SCHOOL**

Title: **UNDERGROUND SERVICES**

Drawn by: **BW** Checked by: **NDO**

Scale: **1:200@AQ** Date: **Oct 2014**

Drawing Number: **TS13-367SC_10** A

Sheet **5** of **5**

All levels related to the GPS network at Station 1.

10/06/14 18.1.44m

